

Quickdraw®

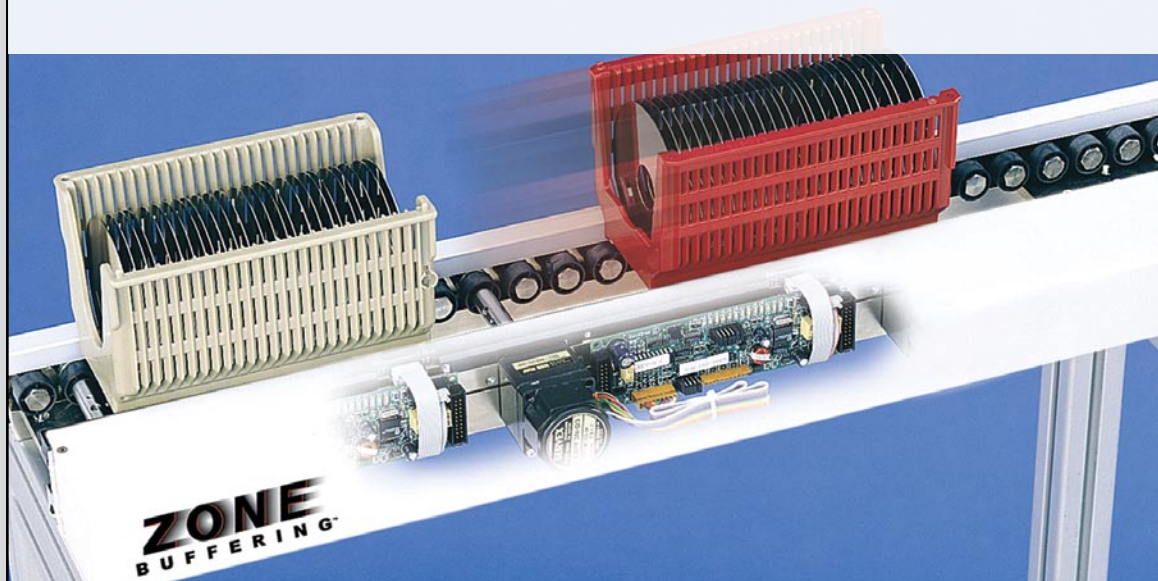
CONVEYOR SYSTEMS by MAGSTAR™ TECHNOLOGIES

Connecting Your Workplace

Quickdraw® designs and manufactures conveyors for factory automation in cleanroom environments. A full line of modular components, both standard and custom, are ideal for medical, micro-electronics, and semiconductor applications. Headquartered in Hopkins, Minnesota, the company serves both domestic and international markets.

ZONE BUFFERING®

INTELLIGENT ZONES



Zone Buffering® is a transport system that provides contact-free accumulation of product along conveyor lines. It features “intelligent” zones—each with its own sensor and motor controller—that effectively buffer products from one another. Products advance to the next zone only if that zone is unoccupied, protecting them from impacts with metering stops or backed-up product.

Additional features include forward/reverse operation, optically isolated PNP or NPN inputs and outputs, optional Intellizone™ PLC connector, choice of zone lengths, and easy setup. All controls and

zone connections are built in—just supply 24 VDC.

Quickdraw conveyors feature self contained sensors, logic and motor controls integrated directly into the compact conveyor rail, while Zone Buffering® technology delivers plug and go operation without a PLC. Patented slip driven rollers, clean roller design, and sealed bearings maintain Cleanroom requirements.

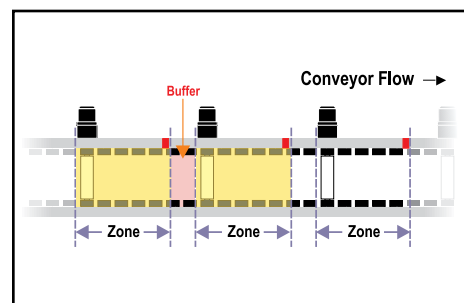
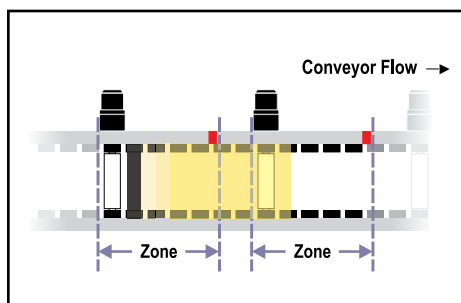
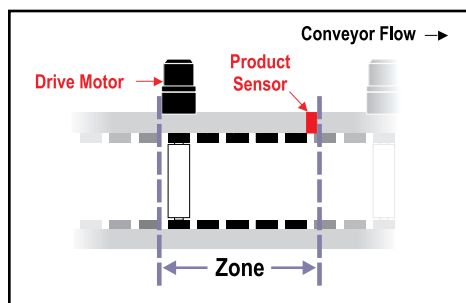
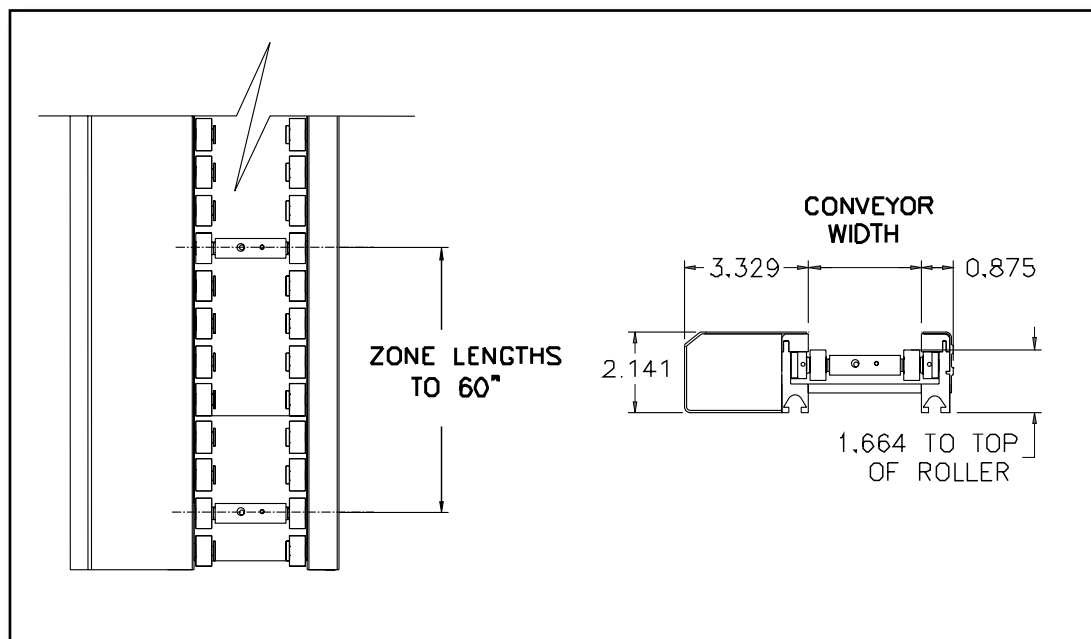
Quickdraw®

CONVEYOR SYSTEMS by MAGSTAR™ TECHNOLOGIES

Connecting Your Workplace

ZONE BUFFERING®

Based on the Quickdraw® original clean-room conveyor, the Zone Buffering® Conveyor is the cleanest MR conveyor yet. The conveyor stops while product is accumulated, therefore debris generation is minimized. Please contact a Quickdraw® applications engineer for more information.



Each Zone along the conveyor has its own drive motor and sensor module. The zone length is slightly longer than the product to be conveyed. A communication cable links each zone control card to the next (downstream) and previous (upstream) zones.

The built-in logic of the zone will turn the motor on to receive product if the zone is unoccupied and the previous zone has product to send. The zone will turn the motor on to send product if the zone is occupied and the next zone is unoccupied. If the next zone is occupied, the zone will hold the product in queue until the next zone clears.

A switch input on the zone control card will hold product regardless of the status of the next zone. This allows a user to perform a task at a zone. Every product that enters the zone will be held for the operation before being released to the next zone. The upstream zone will hold product in queue until the task zone clears. Stopped product is held within the zone, leaving a buffer space between products as they accumulate.