

Quickdraw®

CONVEYOR SYSTEMS by MAGSTAR™ TECHNOLOGIES

Connecting Your Workplace

Quickdraw® designs and manufactures conveyors for laboratory automation in cleanroom environments. A full line of modular components, both standard and custom, are ideal for medical, laboratory, micro-electronics, and semiconductor applications. Headquartered in Hopkins, Minnesota, the company serves both the domestic and international markets.

CLEANROOM

**OFFERS GREATER FLEXIBILITY
WITH 50% SMALLER FOOTPRINT**



A new patented, compact conveyor designed with a low profile and narrow rails offers greater flexibility in tight spaces. With a conveyor height of only 2-7/8" and an overall conveyor width that is only 1-1/2" wider than the transport tray, the

new conveyor yields a footprint 50% smaller than competitors' product. The compact systems can be configured with accessories to complete any desired layout, including precise stops to locate a product for tight tolerance processing.

Along with its compact size, the Quickdraw® brand conveyor includes full featured functionality. Its patented technology incorporates innovative clean roller design with the Quickdraw® Zone Buffering® and Intellizone™ technology. Sensor, logic, and motor controls are all built into the conveyor rail. The control system is self-contained with plug and go operation so no

PLC is needed to set-up or operate the conveyor.

This cleanroom conveyor is the simplest to integrate and one of the easiest to maintain even in Class-1 Cleanroom environments. No belts are used and the only moving elements are sealed ball bearings which eliminates debris as well as the need to service and replace belts.



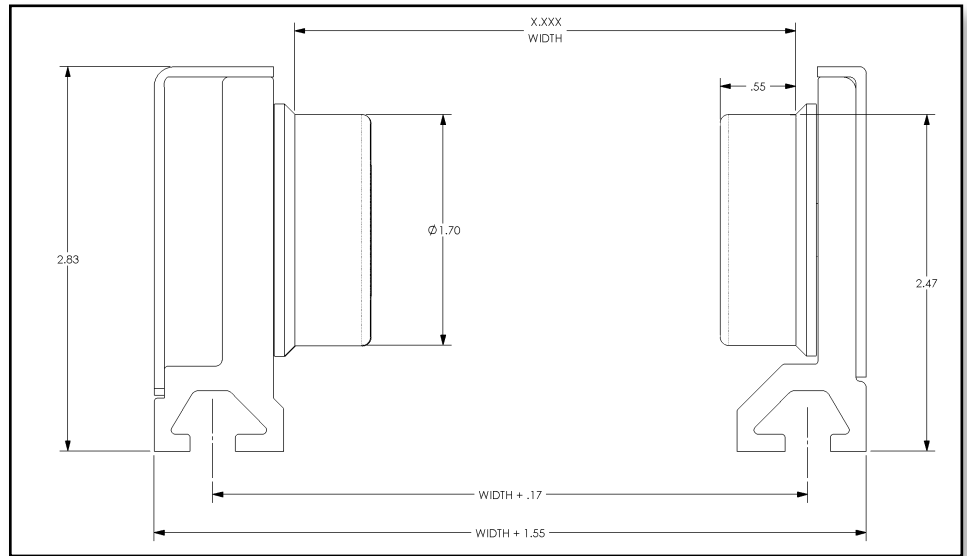
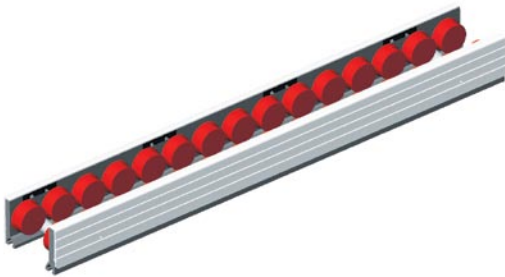
Quickdraw®

CONVEYOR SYSTEMS by MAGSTAR™ TECHNOLOGIES

Connecting Your Workplace

CLEANROOM

Low profile rail offered with fixed or adjustable width incorporates T-slot design to accommodate mounting of accessories. ESD safe. Available in standard and custom configurations. Ideal for OEM applications.



Cleanliness	Class 1 Fed. Std. 209-E (ISO Class 3)
Speed	5 to 15 inches per second
Zone Size	min: 8" • max: N/A
Pallet or Part Size	min: 4" length, 1.5" width • max: N/A
Pallet or Part Weight	min: N/A • max: 1.5 lbs./ inch
Conveyor Lengths	available in 2" increments
Power requirements	24 VDC, 0.5 Amp typical per zone
Features	Bi-directional ESD Safe T-slot design incorporated in rail Plug and play buffering standard Optional PLC monitoring/control
Auxiliary Devices	Elevators, diverters, shuttles, & corner rotates